



146 HIGH STREET
NEWPORT
ISLE OF WIGHT
PO30 1TY

£210,000

A great opportunity to purchase a Grade II Listed mixed retail and residential unit on Newport High Street.

Location

Situated on the southern end of Newport High Street neighbouring properties and businesses include Hose Rhodes Dickson, Swinton Insurance, Age Concern, The Slug and Lettuce and Hogshead.

Newport is the Islands county town and has a population circa 25400 (2011 census) and offers various eateries, independent and multi national retailers and easy links to the rest of the island via the central bus station.

Description

Offered for sale is the whole property which includes ground floor retail unit with approximately 95 sq m (1022 sq ft) of retail and office space plus WC, first floor storage space and garden to rear plus a 2/3 bedroom flat to the first, second and third floors.

These upper floors have been residential and office space in the past and would suit redevelopment.

Once let this property would be a great investment

purchase.

Terms

Our client is asking £210,000 for the freehold. The ground floor retail unit is also available to lease under separate negotiation.

Business Rates

The VOA shows a rateable value of £13,000, rates payable circa £6227 per annum.

Council tax Band B for the upper floors.

Viewings

All viewings to be arranged via HRD Commercial. Please contact 01983 527727.

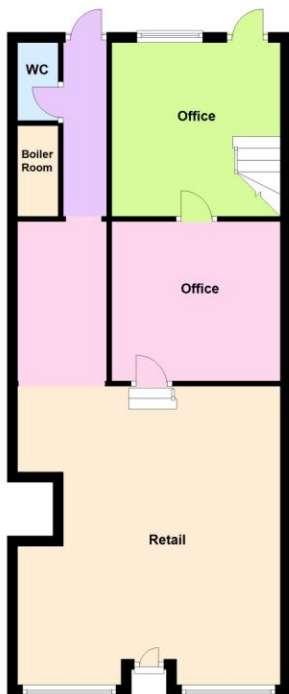
Hose Rhodes Dickson Commercial

01983 527727

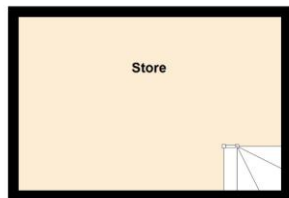
commercial@hrdiw.co.uk

Hose
Rhodes
Dickson

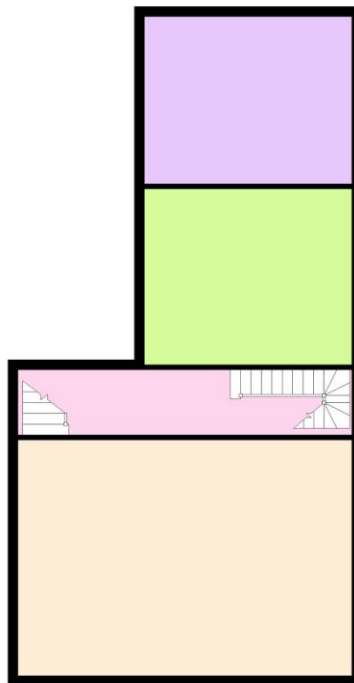
Ground Floor



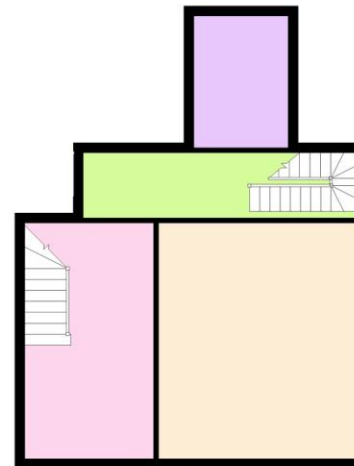
First Floor



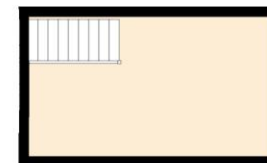
First Floor



Second Floor



Third Floor



Misrepresentation Act 1967

Hose Rhodes Dickson and any joint agents, for themselves and for the vendors or lessors of this property whose agents they are, give notice that, 1) these particulars are set out as a general outline only for the guidance of intending purchasers or lessees and do not constitute part of an offer or contract, 2) all dimensions and areas are approximate and all descriptions, reference to condition and necessary permissions for use and occupation, and other details, are given without responsibility and any intending purchaser or tenant should not rely on them as statements or representations of fact but must satisfy themselves by inspection or otherwise as to the correctness of each of them, 3) no person in the employment of Hose Rhodes Dickson or their joint agents has any authority to make or give any representation or warranty whatever in relation to this property. Unless otherwise stated all rents and prices are quoted exclusive of VAT. 10/2009

